

NAD

**SERVICE
MANUAL**

NAD-1000 CONTENTS

REAR / FRONT PANEL CONNECTIONS	PAGE 3
SPECIFICATIONS	PAGE 4
EXPLODED VIEW	PAGE 5-6
SCHEMATIC DIAGRAM	PAGE 7-8
PCB LAYOUT AND COMPONENT LOCATION	PAGE 9-10
PARTS LIST	PAGE 11-13
PACKING DIAGRAM	PAGE 14

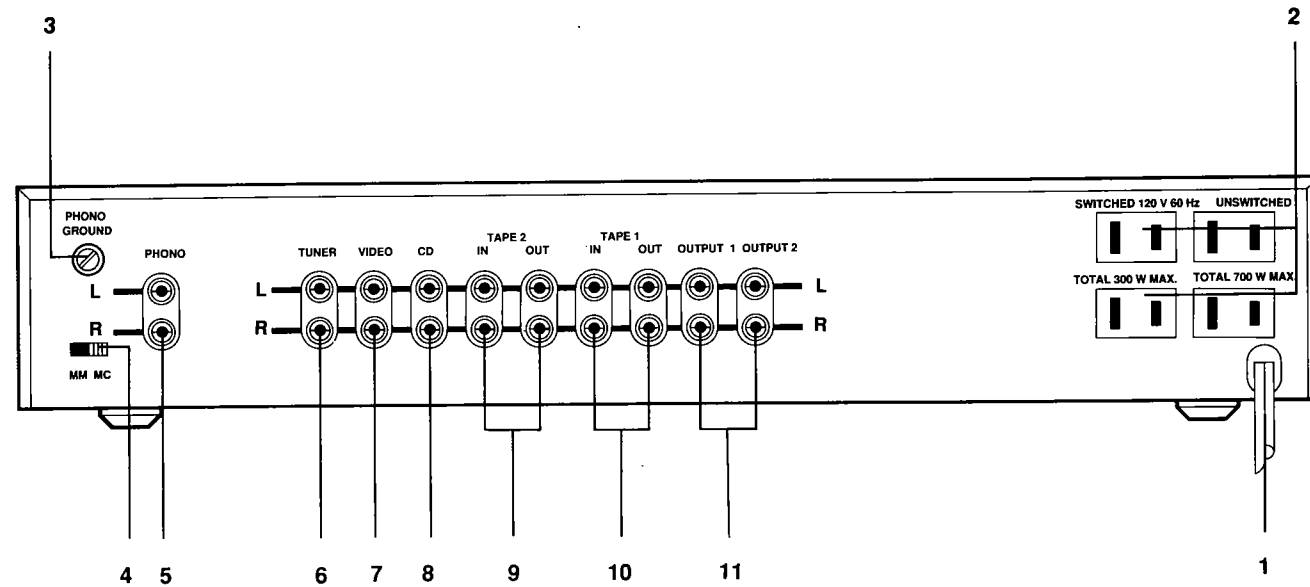
MONITOR SERIES

1000

STEREO PREAMPLIFIER

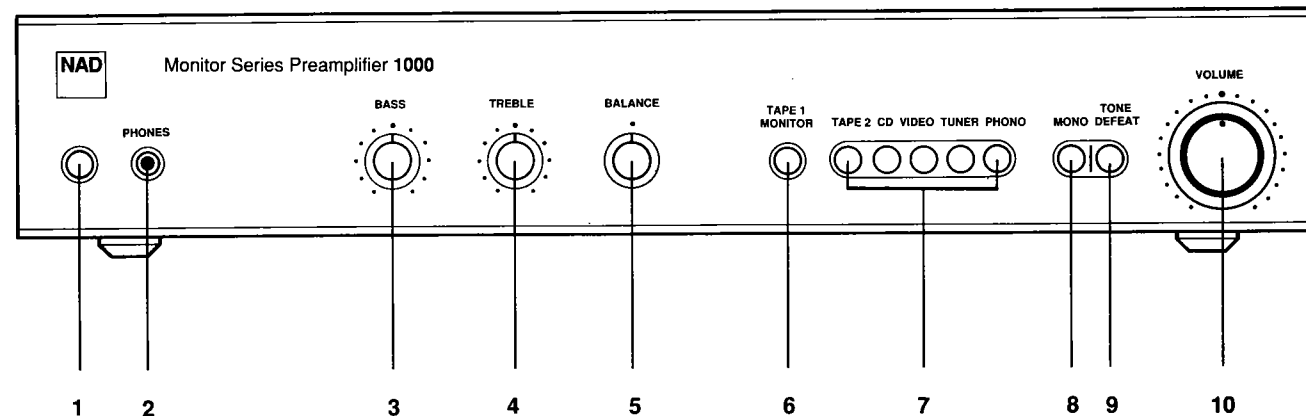
REAR PANEL CONNECTIONS

- | | | |
|-------------------------|--------------------|------------------------|
| 1. AC LINE CORD | 2. AC OUTLETS | 3. PHONO GROUND |
| 4. MM/MC SELECTOR | 5. PHONO INPUT | 6. TUNER INPUT |
| 7. VIDEO SOUND INPUT | 8. CD INPUT | 9. TAPE 2 INPUT/OUTPUT |
| 10. TAPE 1 INPUT/OUTPUT | 11. PREAMP OUTPUTS | |



FRONT PANEL CONNECTIONS

- | | | | |
|----------------|-------------------|-------------------|-----------|
| 1. POWER | 2. PHONES | 3. BASS | 4. TREBLE |
| 5. BALANCE | 6. TAPE 1 MONITOR | 7. INPUT SELECTOR | 8. MONO |
| 9. TONE DEFEAT | 10. VOLUME | | |



NAD 1000 MONITOR SERIES PREAMPLIFIER SPECIFICATIONS

Measured in accordance with EIA Standard RS-490 (IHF A-202).

PHONO INPUT

Input impedance (R and C)	MM and MC:	47 kΩ + 200 pF
Input sensitivity ref. 0.5 V	1 kHz MM:	1.5 mV
	MC:	0.1 mV
Input overload at 20 Hz/1 kHz/20 kHz	MM:	20 mV/200 mV/1700 mV
	MC:	1.3 mV/13 mV/100 mV
Signal/Noise ratio (A-weighted with cartridge connected)	MM:	76 dB ref. 5 mV
	MC:	76 dB ref. 0.5 mV
THD (20 Hz - 20 kHz) and IM dist.		<0.04%
RIAA accuracy		±0.5 dB

LINE LEVEL INPUTS (CD, Video, Tuner, Tape)

Input impedance (R and C)	20 kΩ + 450 pF
Input sensitivity ref. 0.5 V	80 mV
Maximum input signal	>10 V
Signal/Noise ratio, A-weighted (20 Hz - 20 kHz in tone defeat mode)	96 dB ref. 0.5 V
Frequency response	±0.2 dB
Infrasonic filter (fixed)	-3 dB at 10 Hz 18 dB/octave
THD	0.01%

LINE LEVEL OUTPUTS

Output impedance	Pre-amp	220 ohms
	Tape	Source Z + 3200 ohms
	Phones	120 ohms
Maximum output level	Pre-amp	>12 V
	Tape	>10 V
	Phones	>8 V into 600 ohms >250 mV into 8 ohms

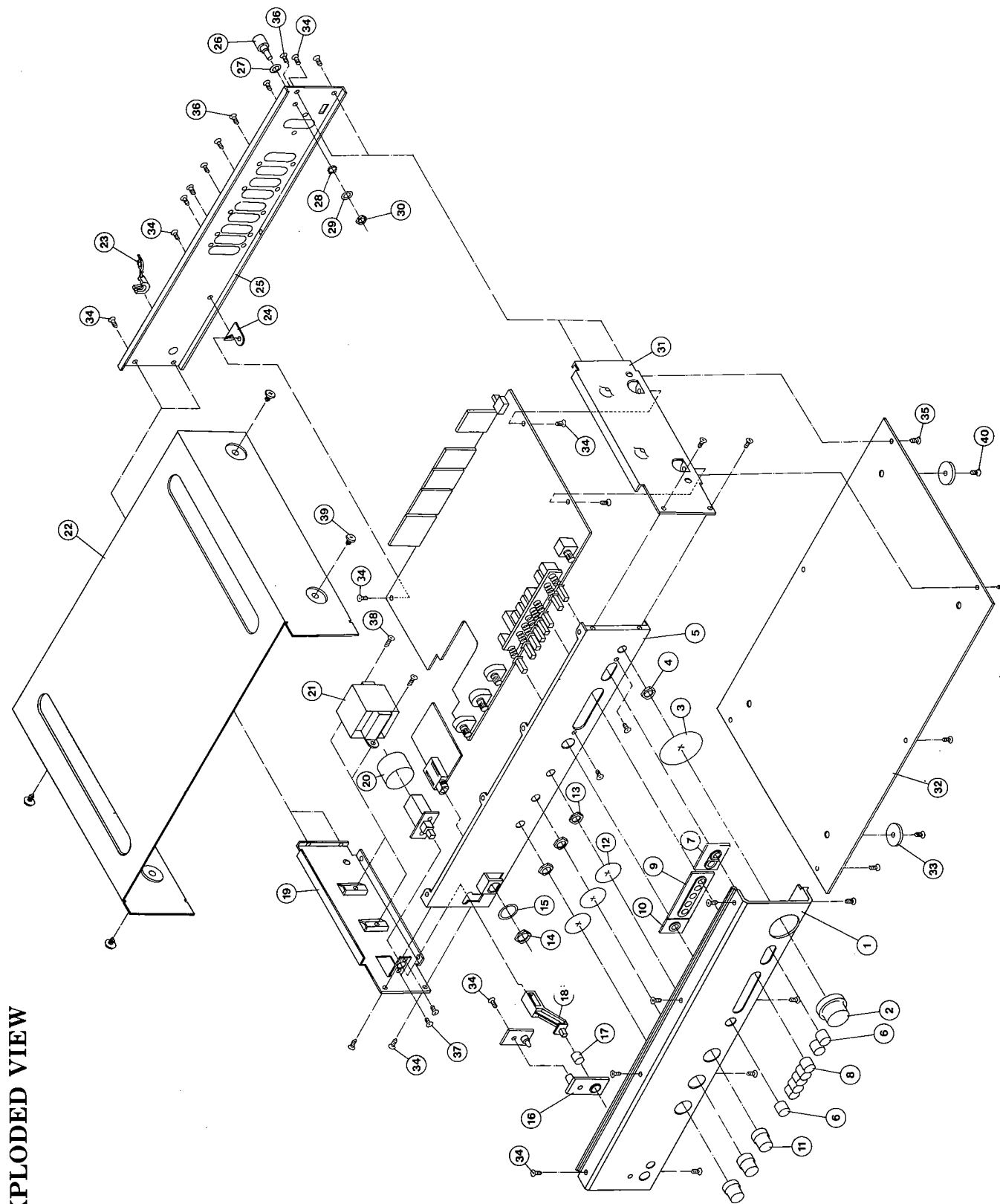
CONTROLS

Treble	±7 dB at 10 kHz
Bass	±10 dB at 50 Hz

PHYSICAL SPECIFICATIONS

Dimensions (Length x Width x Depth)	43.0 x 26.3 x 8.1 cm (16.0 x 10.5 x 3.25 in.)
Net Weight	3.7 kg (8lb 1 oz.)
Shipping Weight	4.4 kg (9lb 11 oz.)
Power Consumption	17 W at 120, 220 or 240 VAC 50/60 Hz

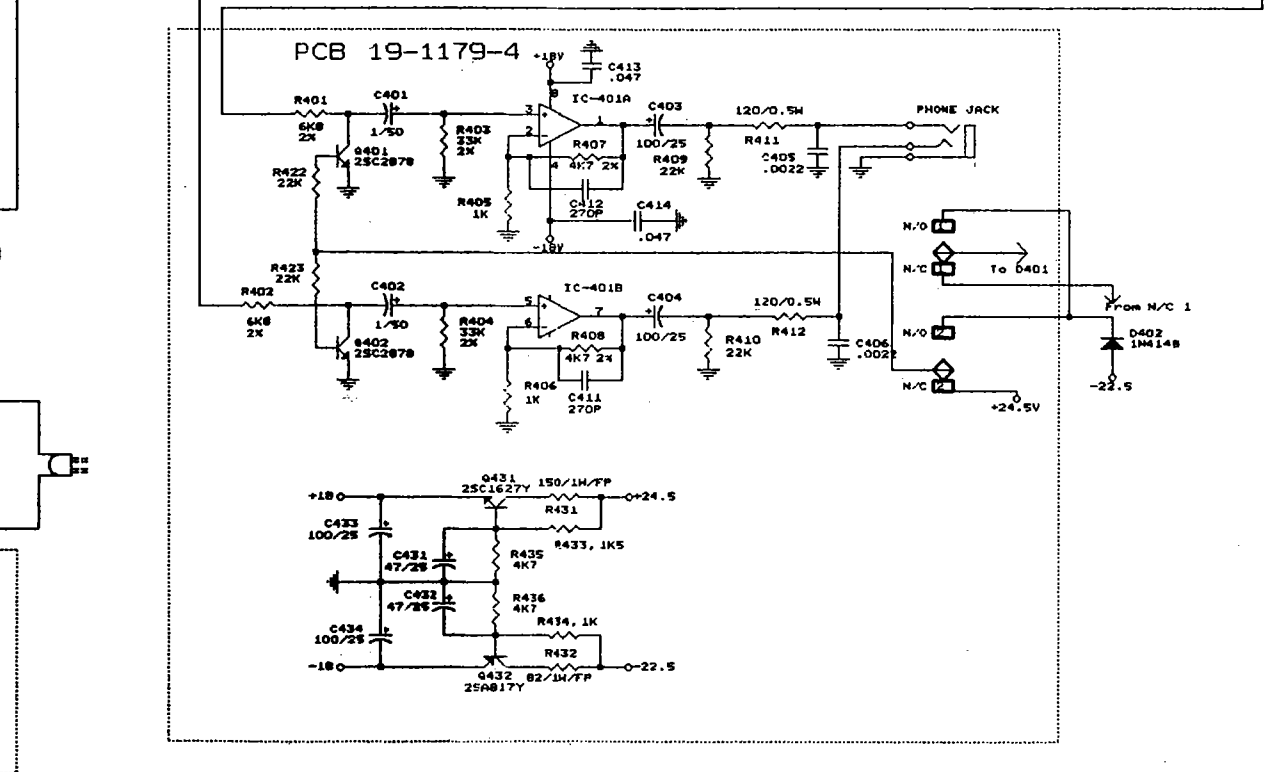
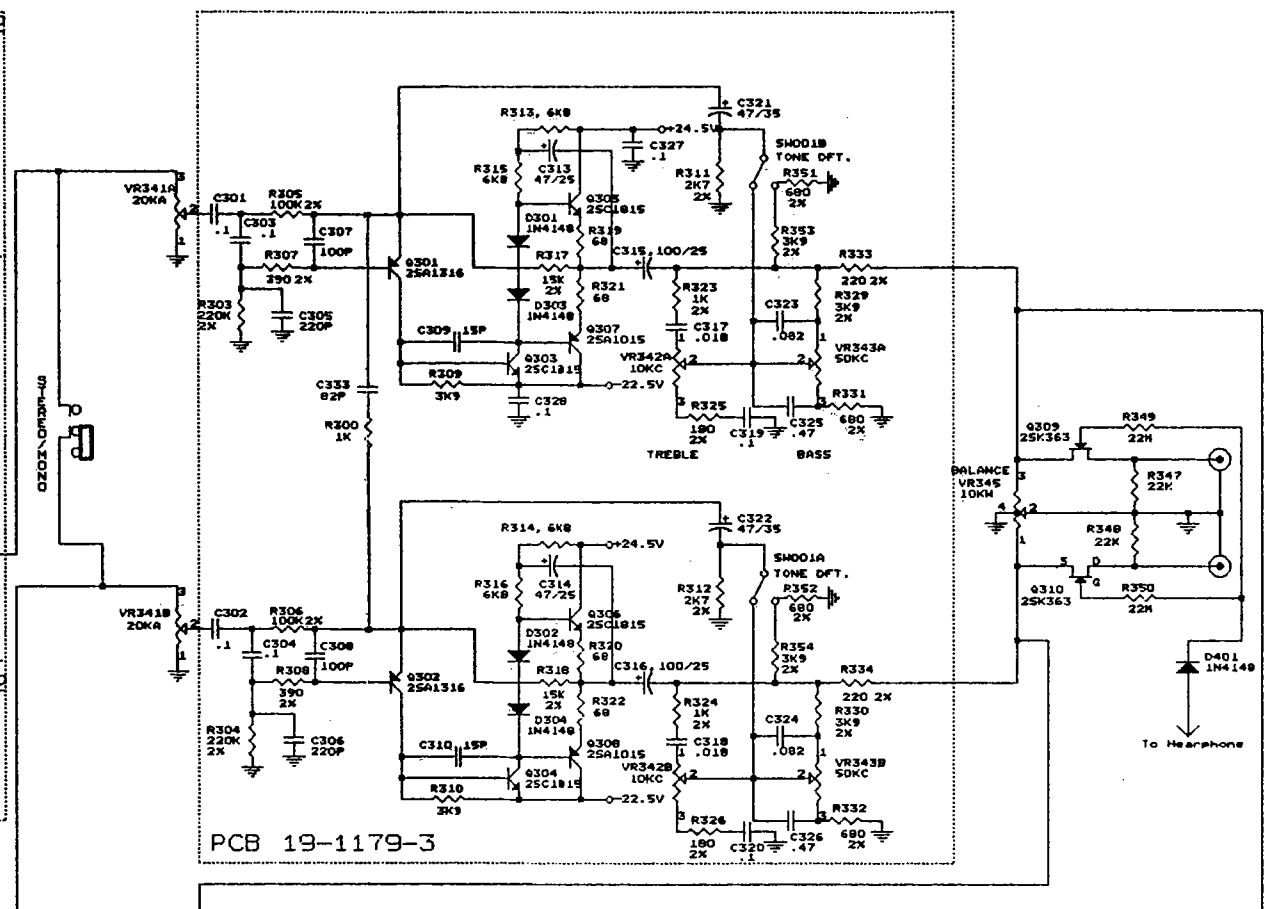
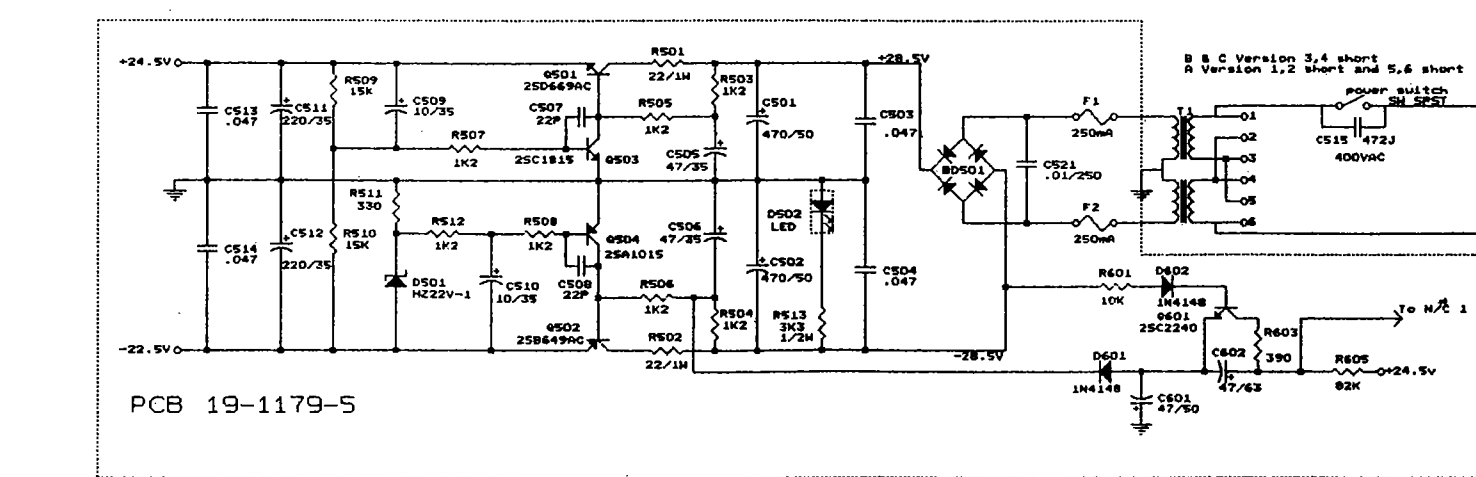
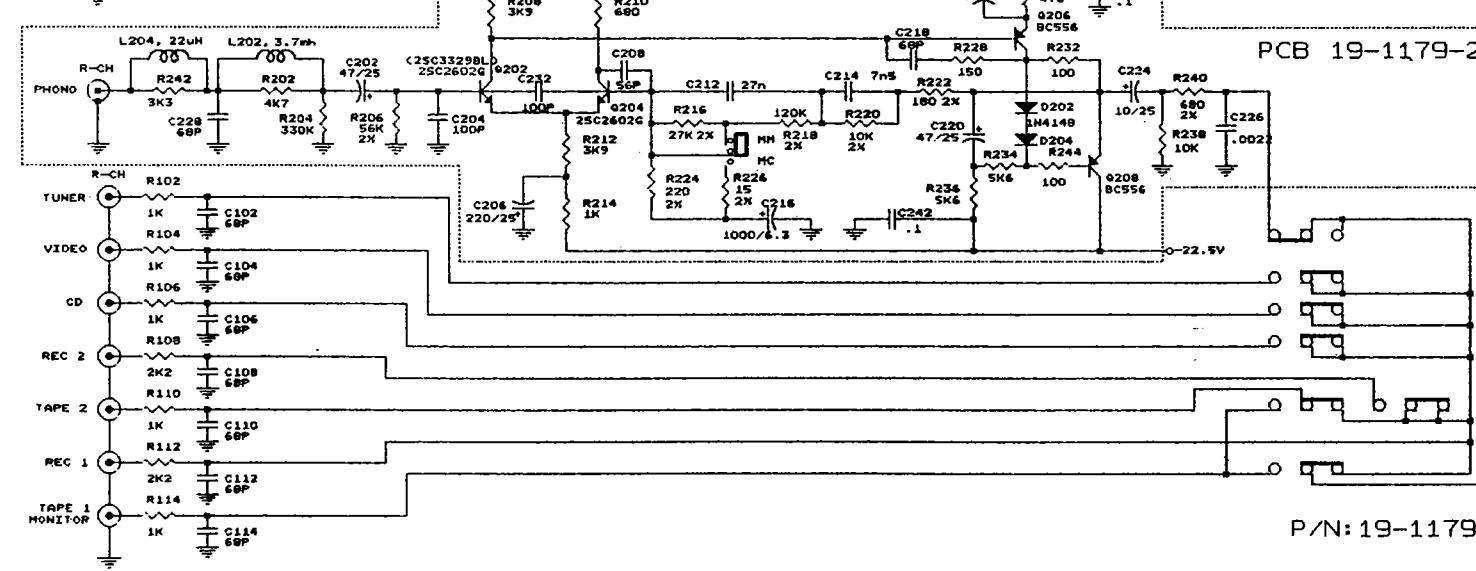
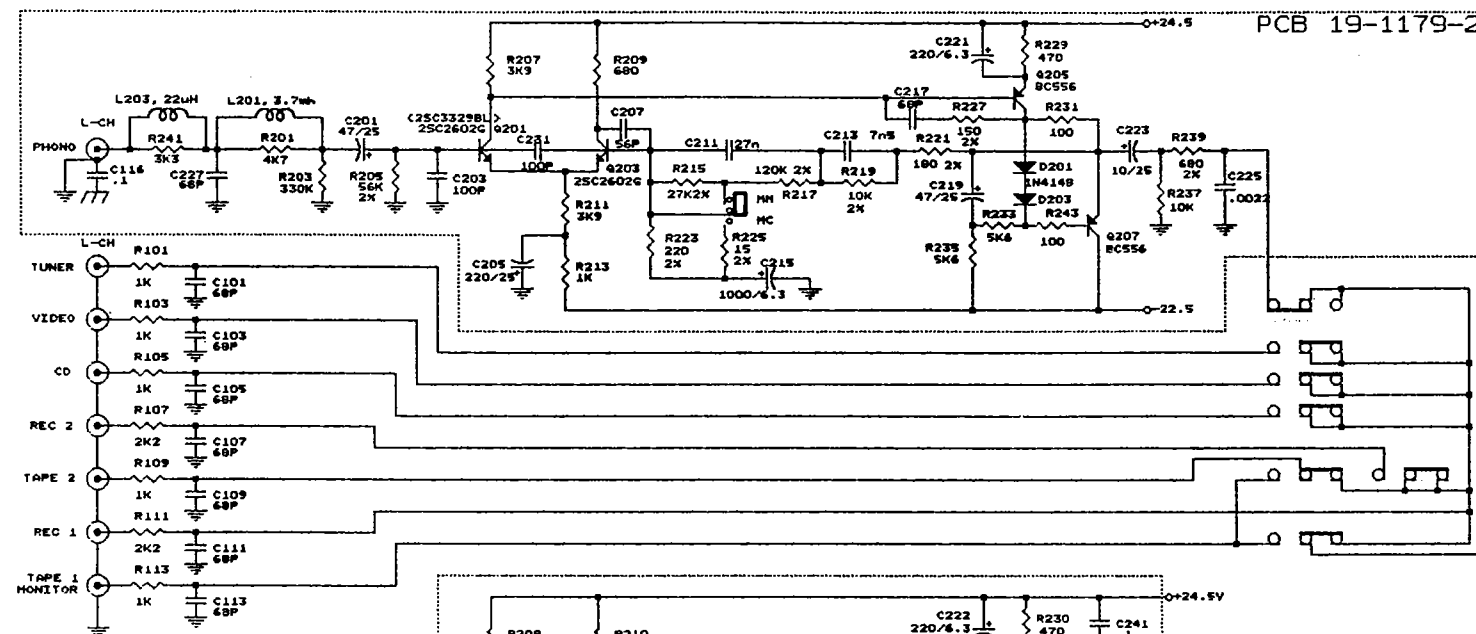
EXPLODED PARTS LIST



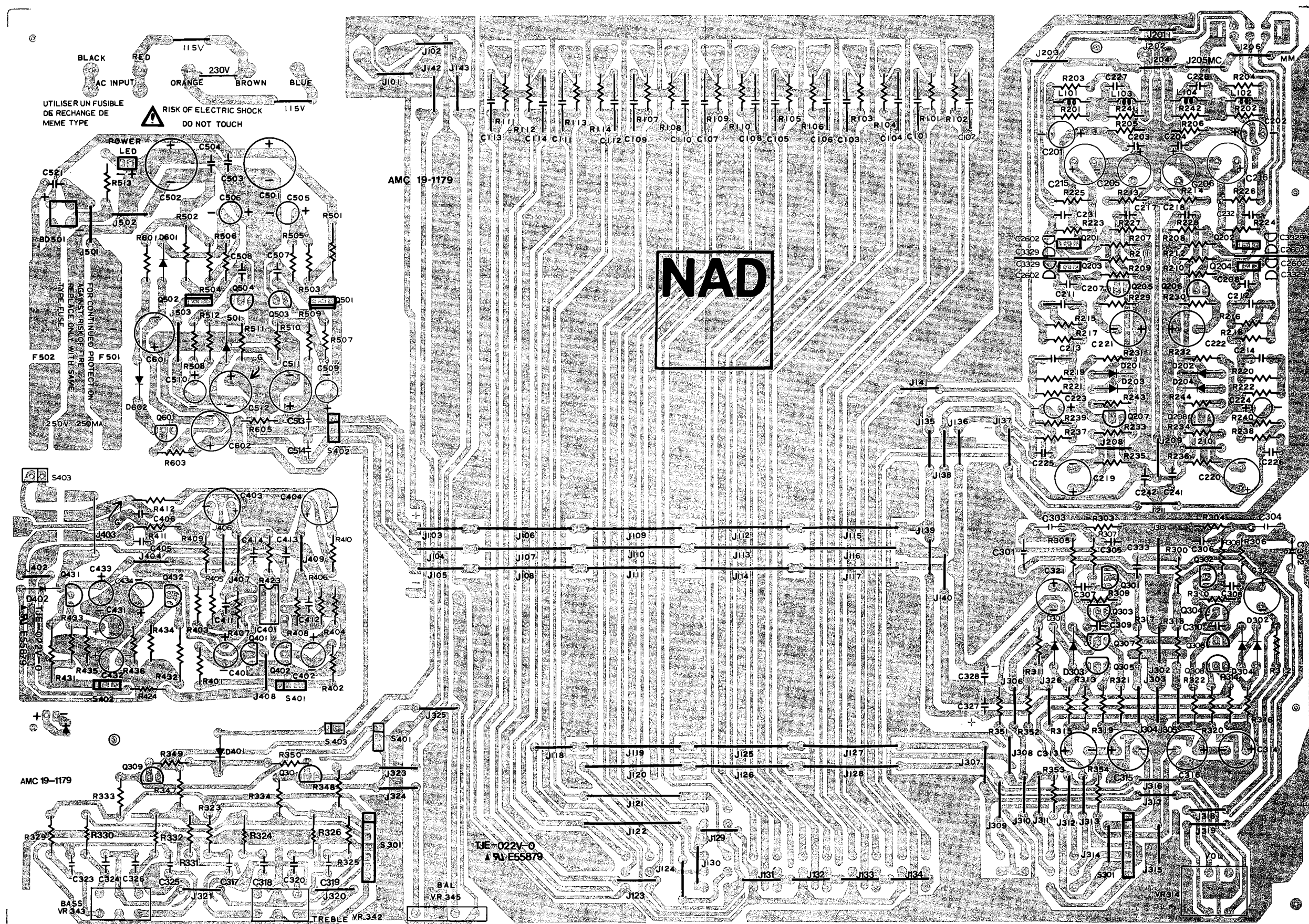
EXPLODED VIEW

1	11-8377	FRONT PANEL	NAD 1000
2	12-3113	KNOB	VOLUME/7100 5541537900
3	12-9003	FELT RING	L550D037H01 50Øx0.5
5	11-6116	FRONT CHASSIS	NAD 1000
6	12-3110	BUTTON BLACK	MONO, TONE DEF, MONITOR
7	13-8221-3	BEZEL 2 HOLE	L704C032H21
8	12-3110-1	BUTTON GRAY	TU, PH, TV, CD, TA2
9	13-8224	BEZEL 5 HOLE	NAD 1000
10	13-8221-2	BEZEL 1 HOLE	L704C032H11
11	12-3129	KNOB	BASS, TREBLE, BALANCE
12	12-9002	FELT RING	L550D037H02 30Øx0.5
16	13-8221-1	BEZEL POWER	L704C032H01
17	12-3148	BUTTON GREEN	P-021
18	12-1083	POWER LINK	1171300001
19	11-6117	FRAME L	L547B030H01
20	12-7103	TUBE/SVGS-UL	SVGS-UL, 30Ø, 60mm, 1 DIA
21	29-2064	TRANSFORMER	Universal/PX-1914
22	50-1034	COVER TOP	L703A004H01
23	14-5003	BUSHINGS	4RF-5
24	11-2345	"L" BRACKET	NAD 1000
25	11-8378-1	REAR PANEL	US CN/ (120V) NAD 1000
25	11-8378-2	REAR PANEL	WG, EU, SA/ (220V) NAD 1000
25	11-8378-3	REAR PANEL	UK, AS/ (240V) NAD 1000
26	15-2037	GND BOLT	L531D018H01
26	15-2037-1	GND NUT	L670D002H01
27	15-2037-3	STOP WASHER	10Ø, 4Ø, 1mm
28	15-2037-5	GEAR WASHER	
29	15-2037-4	CONNECT WASHER	B3.5Ø, S1.5Ø, 1.5mm
30	15-2037-2	BOLT NUT M3.5	L670D004H01
31	11-6118	FRAME R	L547B031H01
32	11-6119	COVER BOTTOM	L580B007H01
33	28-1044	A562	RUBBER-FOOT
34	S2B03+I06SL20	TAPPING SCREW	T3x6 BLACK
35	S2B03+I06SZ20	TAPPING SCREW	T3x6 COLOR
36	S6B03+I08SL20	TAPPING SCREW	T3x8 BLACK
37	S1B03+I06SL20	MACHINE SCREW	M3x6 BLACK
38	S2J03+I06SL20	TAPPING SCREW	T3x6 W/WASHER BLACK
39	S1K04+I06SL20	TAPPING SCREW	T3x6 W/WASHER BLACK
40	S1B04+I08SL20	MACHINE SCREW	M4x8 BLACK

SCHEMATIC DIAGRAM



PCB LAYOUT AND COMPONENT LOCATION



SYMBOL NO.	Q'TY	I/D	PART NO.	DESCRIPTION	SPACIFICATION	V/No.
	1		NAD 1000	PREAMPLIFY	MONITOR SERIES	
	1		NAD1000-ASSY	ASS'Y	MECHANICAL	
	1		NAD1000-MO	ASS'Y	BOARD ASS'Y	
MECHANISM	1		NAD1000-PA	ASS'Y	AUTOINSERT	
MECHANISM	1		11-8377	FRONT PANEL	NAD 1000	11-8377
MECHANISM	1		11-6118	FRAME R	L547B031H01	L547B031H01
MECHANISM	1		11-6117	FRAME L	L547B030H01	L547B030H01
MECHANISM	1		11-2345	"L" BRACKET	NAD 1000	11-2345
MECHANISM	1 A		11-8378-1	REAR PANEL	US CH/ (120V) NAD 1000	11-8378-1
MECHANISM	1 AI		11-8378-1	REAR PANEL	US CH/ (120V) NAD 1000	11-8378-1
MECHANISM	1 C		11-8378-2	REAR PANEL	WG,EU,SA/ (220V) NAD 1000	11-8378-2
MECHANISM	1 CI		11-8378-2	REAR PANEL	WG,EU,SA/ (220V) NAD 1000	11-8378-2
MECHANISM	1 B		11-8378-3	REAR PANEL	UK,AS/ (240V) NAD 1000	11-8378-3
MECHANISM	1 BI		11-8378-3	REAR PANEL	UK,AS/ (240V) NAD 1000	11-8378-3
MECHANISM	1		50-1034	COVER TOP	L703A004H01	L703A004H01
MECHANISM	1		11-6119	COVER BOTTOM	L580B007H01	L580B007H01
MECHANISM	1		11-6116	FRONT CHASSIS	NAD 1000	11-6116
MECHANISM	1		12-3113	KNOB	VOLUME/7100 5541537900	5541537900
MECHANISM	3		12-3129	KNOB	BASS, TREBLE, BALANCE	5541537510
MECHANISM	1		12-1083	POWER LINK	1171300001	1171300001
MECHANISM	1		12-3148	BUTTON GREEN	POWER	L704D105H01
MECHANISM	3		12-3110	BUTTON BLACK	MONO, TONE DEF, MONITOR	L704D106H01
MECHANISM	5		12-3110-1	BUTTON GRAY	TU, PH, TV, CD, TA2	L704D106H11
MECHANISM	1		13-8221-3	BEZEL 2 HOLE	704C032H21	704C032H21
MECHANISM	1		13-8221-2	BEZEL 1 HOLE	704C032H11	704C032H11
MECHANISM	1		13-8221-1	BEZEL POWER	704C032H01	704C032H01
MECHANISM	1		13-8224	BEZEL 5 HOLE	NAD 1000	13-8224
POWER	4 A		12-2110	AC INLET	SI6519	L449Y002H02
POWER	4 AI		12-2110	AC INLET	SI6519	L449Y002H02
POWER	1 A		14-5027	POWER-CORD	A1, A (US, GP, CN)	
POWER	1 AI		14-5027	POWER-CORD	A1, A (US, GP, CN)	
POWER	1 B		14-5025	POWER-CORD	B (UK)	U242C872H06
POWER	1 BI		14-5022	POWER-CORD	B1 (AS)	L242Y013H01
POWER	1 C		14-5028	POWER-CORD	C2, C1, C (WG, EU, SA)	U242C809H19
POWER	1 CI		14-5028	POWER-CORD	C2, C1, C (WG, EU, SA)	U242C809H19
POWER	1		14-5003	BUSHINGS	4RP-5	L540D501H01
POWER	1		29-2064	TRANSFORMER	Universal/PX-1914	PX-1914
POWER	1 B		12-1068	WJ-2/C4	CLOSED END CONNECTOR	
POWER	1 BI		12-1068	WJ-2/C4	CLOSED END CONNECTOR	
POWER	1 C		12-1068	WJ-2/C4	CLOSED END CONNECTOR	
POWER	1 CI		12-1068	WJ-2/C4	CLOSED END CONNECTOR	
POWER	1		31-1213	SW-POWER	SDDL1007U-BK TV-3	
POWER	3		12-9002	FELT RING	L550D037H02 300x0.5	12-9002
POWER	1		12-9003	FELT RING	L550D037H01 500x0.5	12-9003
POWER	1 B		14-10001	LEAD POWER SW	UL1617#22 390+15mm BWN	
POWER	1 BI		14-10001	LEAD POWER SW	UL1617#22 390+15mm BWN	
POWER	1 C		14-10001	LEAD POWER SW	UL1617#22 390+15mm BWN	
POWER	1 CI		14-10001	LEAD POWER SW	UL1617#22 390+15mm BWN	
POWER	1 B		14-10002	LEAD POWER SW	UL1617#22 380+15mm ORG	
POWER	1 BI		14-10002	LEAD POWER SW	UL1617#22 380+15mm ORG	
POWER	1 C		14-10002	LEAD POWER SW	UL1617#22 380+15mm ORG	

SYMBOL NO.	Q'TY	I/D	PART NO.	DESCRIPTION	SPACIFICATION	V/No.
	1	C1	14-10002	LEAD POWER SW	UL1617#22 380+15mm ORG	
	1	A	14-1000A	LEAD WIRE	UL1617#22 150+15mm RED	
	1	AI	14-1000A	LEAD WIRE	UL1617#22 150+15mm RED	
	1	A	14-1000B	LEAD WIRE	UL1617#22 150+15mm BLK	
	1	AI	14-1000B	LEAD WIRE	UL1617#22 150+15mm BLK	
	3	A	14-1000C	LEAD WIRE	UL1617#22 80+15mm BLK	
	3	AI	14-1000C	LEAD WIRE	UL1617#22 80+15mm BLK	
	2	A	14-1000D	LEAD WIRE	UL1617#22 80+15mm RED	
	2	AI	14-1000D	LEAD WIRE	UL1617#22 80+15mm RED	
	1	A	14-1000E	LEAD WIRE	UL1617#22 210+15mm ORG	
	1	AI	14-1000E	LEAD WIRE	UL1617#22 210+15mm ORG	
	1	A	14-1000F	LEAD WIRE	UL1617#22 230+15mm BWN	
	1	AI	14-1000F	LEAD WIRE	UL1617#22 230+15mm BWN	
	1		14-10003	FLAT CABLE	UL2877#26 280mm 7P BLK KINK	
	1		14-10004	FLAT CABLE	UL2877#26 240mm 3P BLK KINK	
	1		14-10005	FLAT CABLE	UL2877#26 270mm 3P BLK KINK	
	1		14-10006	FLAT CABLE	UL2877#26 220mm 2P BLK KINK	
	1		14-10007	LEAD WIRE	UL1007#20 330mm BLK KINK	
	1		14-10008	LEAD WIRE	UL1007#20 110mm BLK KINK	
	1		14-10009	LEAD WIRE	UL2877#26 430mm 2P BLK KINK	
	1		12-7103	TUBE/SVGS-UL	SVGS-UL, 300, 60mm, 1 DIA	00705670H01
	1		12-7104	TUBE/SVGS-UL	SVGS-UL, 100, 20mm, 1 DIA	
	4		28-1044	A562	RUBBER-FOOT	
	1		21-2288	L851D056H01	INSPECTION LABEL	L771D011H01
	2.5	A	21-2284-A	5535444900	120V/UL-1 VERSION LABEL	L851D056H01
	2.5	AI	21-2284-A1	5535444910	120V/UL-1 VERSION LABEL	
	2.5	B	21-2284-B	5535444920	240V/BS VERSION LABEL	
	2.5	BI	21-2284-B1	5535444930	240V/SA-2 VERSION LABEL	
	2.5	C	21-2284-C	5535444940	220V/CBE2 VERSION LABEL	
	2.5	CI	21-2284-C1	5535444950	220V/CBE2 VERSION LABEL	
	3		21-2306	SERIES LABEL	M1000xxxxx	21-2306
	1	B	21-2307	POWER TAG	B Version only	
	2	AI	21-2315	CAUTION LABEL	UL only	
	1	CI	TUV-1000	FTZ LABEL	TUV only	
	1	AI	UL-1000	UL LABEL	UL only	
	1	A	CSA-1000	CSA LABEL	CSA only	
	0.5		21-2302	PACKING LABEL	NAD SUPPORT	
	1		28-2070	L552D013H01	EVA CUSHION SPONGE	
	1		28-3001	ISOLATE PVC	U100(PB) .5x80x30mm/BK	
	1	A	28-3002	ISOLATE PVC	PRS-825 .5x80x45mm/BK	
	1	AI	28-3002	ISOLATE PVC	PRS-825 .5x80x45mm/BK	
	1		21-4041	INSTRUCTION	OWNER'S MANUAL	
	1	AI	21-3004	SAFETY INSTRUCTION		
	1		27-0718	POLY BAG	240x338	L831D003H01
	1		26-0716	POLY BAG	380x550	L831D004H01
	1		26-0712	POLY BAG	200x100	
	15		14-5006	CABLE TIE	LCT-80 80x2.5mm	L243Y009H01
	1		27-2012	RCA CABLE	100cm	U096S004H01
	1	B	21-4034	WARRANTY CARD	UK	L850B016H11
	1	A	21-3006	WARRANTY CARD	CANADA	L850C008H01
	1	AI	21-3003S	WARRANTY CARD	US	

SYMBOL NO.	Q'TY	I/D	PART NO.	DESCRIPTION	SPACIFICATION	V/No.
	2		34-1059	POLYLONE		9520820155
	1		CT-5193	CARTON	INNER CARTON NAD 1000	
	0.25		CT-5194	CARTON	OUTER CARTON NAD 1000	
TOP COVER	4		S1K04+I06SL20	TAPPING SCREW	T3x6 W/WASHER BLACK	
SURROUND	20		S2B03+I06SL20	TAPPING SCREW	T3x6 BLACK	
BOTTOM COVER	6		S2B03+I06S220	TAPPING SCREW	T3x6 COLOR	
POWER/FUN. SW	4		S1B03+I06SL20	MACHINE SCREW	M3x6 BLACK	
RCA JACK	12		S6B03+I08SL20	TAPPING SCREW	T3x8 BLACK	
FOOT	4		S1B04+I08SL20	MACHINE SCREW	M4x8 BLACK	
X'MBR	2		S2J03+I06SL20	TAPPING SCREW	T3x6 W/WASHER BLACK	
	1		15-2037	SHAFT-GND	L531D018H01	
	1		15-2037-1	NUT GND	L670D002H01	
	1		15-2037-2	NUT M3.5	L670D004H01	
	1		15-2037-3	WASHER	100, 40, 1mm	
	1		15-2037-4	CONNECT WASHER	B3.50, S1.50, 1.5mm	
	1		15-2037-5	GEAR WASHER		
	1		90-1179	PCB ASS'Y	BOARD ASSEMBLY	

	1		19-1179	PCB-MAIN	NAD-1000 MAIN PCB	
R107, R108	4		16-1/4CA222J	RES. C. F.	2K2, 1/4W, ±5%	
R111, R112	4		16-1/4CA222J	RES. C. F.	2K2, 1/4W, ±5%	
R101, R106	10		16-1/4CA102J	RES. C. F.	1K, 1/4W, ±5%	
R109, R110	10		16-1/4CA102J	RES. C. F.	1K, 1/4W, ±5%	
R113, R114	10		16-1/4CA102J	RES. C. F.	1K, 1/4W, ±5%	
C101-C114	14		17-5SR101J	CAP. SA	P.S., 100pF/50V, ±5%	
	28		13-4087	PLASTIC WASHER	4.50x4.2mm	104
CI16	1		17-5CR104M	CAP.	C.C., .0.1uF/50V, ±20%	
PH/TU/VI/CD/TA2	1		31-1210	SW-SBL (P)	SPUN51K004-BK	
TONE DEFECT & MONO	1		31-1209	SW-SBL (P)	SPUN21K006-BK	
(31-1209) + (31-1210)	0		31-1207	SW-SBL (S)	SPUN71K002-BK	
MONITOR	1		31-1211	SW-MONITOR	SPUN12K801-BK	
VR345/BALANCE	1		29-4141	VR BAL	RK1631118291-10KW-BK	
VR341/VOLUME	1		29-4146	VR VOL	RK18112A0-20KAX2	
TU, TV, TA2(O), TA1(I)	2		12-2092	RCA JACK, 4P		12-2092
CD, TA2(I)	1		12-2092GL	RCA JACK, 4P	GOLD PLATE LEFT	12-2092GL
TA1(O), O/P(1,2)	1		12-2093	RCA JACK, 6P	12-2093, TGT	12-2093

	1		19-1179-2	PCB-SUB	PHONO CRT	
R231, R232	2		16-1/4CA101J	RES. C. F.	100, 1/4W, ±5%	
R243, R244	2		16-1/4CA101J	RES. C. F.	100, 1/4W, ±5%	
R213, R214	2		16-1/4CA102J	RES. C. F.	1K, 1/4W, ±5%	
R237, R238	2		16-1/4CA103J	RES. C. F.	10K, 1/4W, ±5%	
R227, R228	2		16-1/4CA151J	RES. C. F.	150, 1/4W, ±5%	
R241, R242	2		16-1/4CA332J	RES. C. F.	3K3, 1/4W, ±5%	
R203, R204	2		16-1/4CA334J	RES. C. F.	330K, 1/4W, ±5%	
R207, R208	2		16-1/4CA392J	RES. C. F.	3K9, 1/4W, ±5%	
R211, R212	2		16-1/4CA392J	RES. C. F.	3K9, 1/4W, ±5%	
R229, R230	2		16-1/4CA471J	RES. C. F.	470, 1/4W, ±5%	
R201, R202	2		16-1/4CA472J	RES. C. F.	4K7, 1/4W, ±5%	
R233, R236	4		16-1/4CA562J	RES. C. F.	5K6, 1/4W, ±5%	
R209, R210	2		16-1/4CA681J	RES. C. F.	680, 1/4W, ±5%	

SYMBOL NO.	Q'TY	I/D	PART NO.	DESCRIPTION	SPACIFICATION	V/No.
R311, R312	2		16-1/4MA272G	RES. M. F.	2K7, 1/4W, ±2%	
R307, R308	2		16-1/4MA391G	RES. M. F.	390, 1/4W, ±2%	
R329, R330	2		16-1/4MA392G	RES. M. F.	3K9, 1/4W, ±2%	
R353, R354	2		16-1/4MA392G	RES. M. F.	3K9, 1/4W, ±2%	
R331, R332	2		16-1/4MA681G	RES. M. F.	680, 1/4W, ±2%	
R351, R352	2		16-1/4MA681G	RES. M. F.	680, 1/4W, ±2%	
C315, C316	2		17-2.5BR107ML	CAP. EL.	100uF/25V, ±20%, L.L.	
C313, C314	2		17-2.5BR476ML	CAP. EL.	47uF/25V, ±20%, L.L.	
C321, C322	2		17-3.5BR476ML	CAP. EL.	47uF/35V, ±20%, L.L.	
C309, C310	2		17-5DR150J	CAP.	MC.C., 15pF/50V, ±5%	
C325, C326	2		17-5FR474J	CAP.	M.PE., 0.47uF/50V, ±5%	
C327, C328	2		17-5FR104J	CAP.	M.PE., 0.1uF/50V, ±5%	
C319, C320	2		17-5FR104J	CAP.	M.PE., 0.1uF/50V, ±5%	
C317, C318	2		17-5FR183J	CAP.	M.PE., 18nF/50V, ±5%	
C323, C324	2		17-5FR823J	CAP.	M.PE., 82nF/50V, ±5%	
C307, C308	2		17-5SR101J	CAP. SR	P.S., 100pF/50V, ±5%	
C301-C304	4		17-5PR104J	CAP.	P.P., 0.1uF/50V, ±5%	
C305, C306	2		17-5SR221J	CAP. SR	P.S., 220pF/50V, ±5%	
C333.	2		17-5SR820J	CAP. SR	P.S., 82pF/50V, ±5%	

AC INPUT	10		19-1179-5	PCB-SUB	POWER CKT	
BD501	1		13-6027	SQUARE PIN	1.0x16mm	
Q501	1		30-RB153M	BRIDGE DIODE	RB153 UL	L264D017R01
Q502	1		30-2SD669AC	TR.	2SD669A(C), HITACH	
Q501	1		30-2SB649AC	TR.	2SB649A(C), HITACH	
Q501	1		30-2SC2240G	TR.	2SC2240GR, TOSHIBA	
Q504	1		30-2SA1015G	TR.	2SA1015GR, TOSHIBA	
Q503	1		30-2SC1815G	TR.	2SC1815GR, TOSHIBA	
D501	1		30-HZ22-2	ZENER DIODE	ZD-22V, 1/2W, ±5%	
D601, D602	2		30-1M4148	DIODE	1M4148	
F1, F2.	4		32S2014	CLAMPER	FUSE CLAMPER, CPF-011	
F1, F2.	2	A	32-2019	SGAO.25	250mA/125V, 5x20mmT, SGA, UL	
F1, F2.	2	A1	32-2019	SGAO.25	250mA/125V, 5x20mmT, SGA, UL	
F1, F2.	2	B	32-2020	218.250	250mA/250V, 5x20mmT, SENKO	
F1, F2.	2	B1	32-2020	218.250	250mA/250V, 5x20mmT, SENKO	
F1, F2.	2	C	32-2020	218.250	250mA/250V, 5x20mmT, SENKO	
F1, F2.	2	C1	32-2020	218.250	250mA/250V, 5x20mmT, SENKO	
R501, R502	2		16-1MK220J	RES. M. F.	22, 1W, ±5%, KINK	
R513.	1		16-1/2CA332J	RES. C. F.	3K3, 1/2W, ±5%, TAPE	
R601.	1		16-1/4CA103J	RES. C. F.	10K, 1/4W, ±5%	
R503-R508	7		16-1/4CA122J	RES. C. F.	1K2, 1/4W, ±5%	
R512	7		16-1/4CA122J	RES. C. F.	1K2, 1/4W, ±5%	
R509, R510	2		16-1/4CA153J	RES. C. F.	15K, 1/4W, ±5%	
R511.	1		16-1/4CA331J	RES. C. F.	330, 1/4W, ±5%	
R603.	1		16-1/4CA391J	RES. C. F.	390, 1/4W, ±5%	
R605.	1		16-1/4CA823J	RES. C. F.	82K, 1/4W, ±5%	
C515.	1		17-40CR472M	CAP.	4700pF/400V, ±20%	
C509, C510	2		17-3.5BR106M	CAP.	10uF/35V, ±20%	
C511, C512	2		17-3.5BR227M	CAP.	220uF/35V, ±20%	
C501, C502	2		17-5BR477M	CAP.	470uF/50V, ±20%	
C505, C506	2		17-3.5BR476M	CAP. EL.	47uF/35V, ±20%	

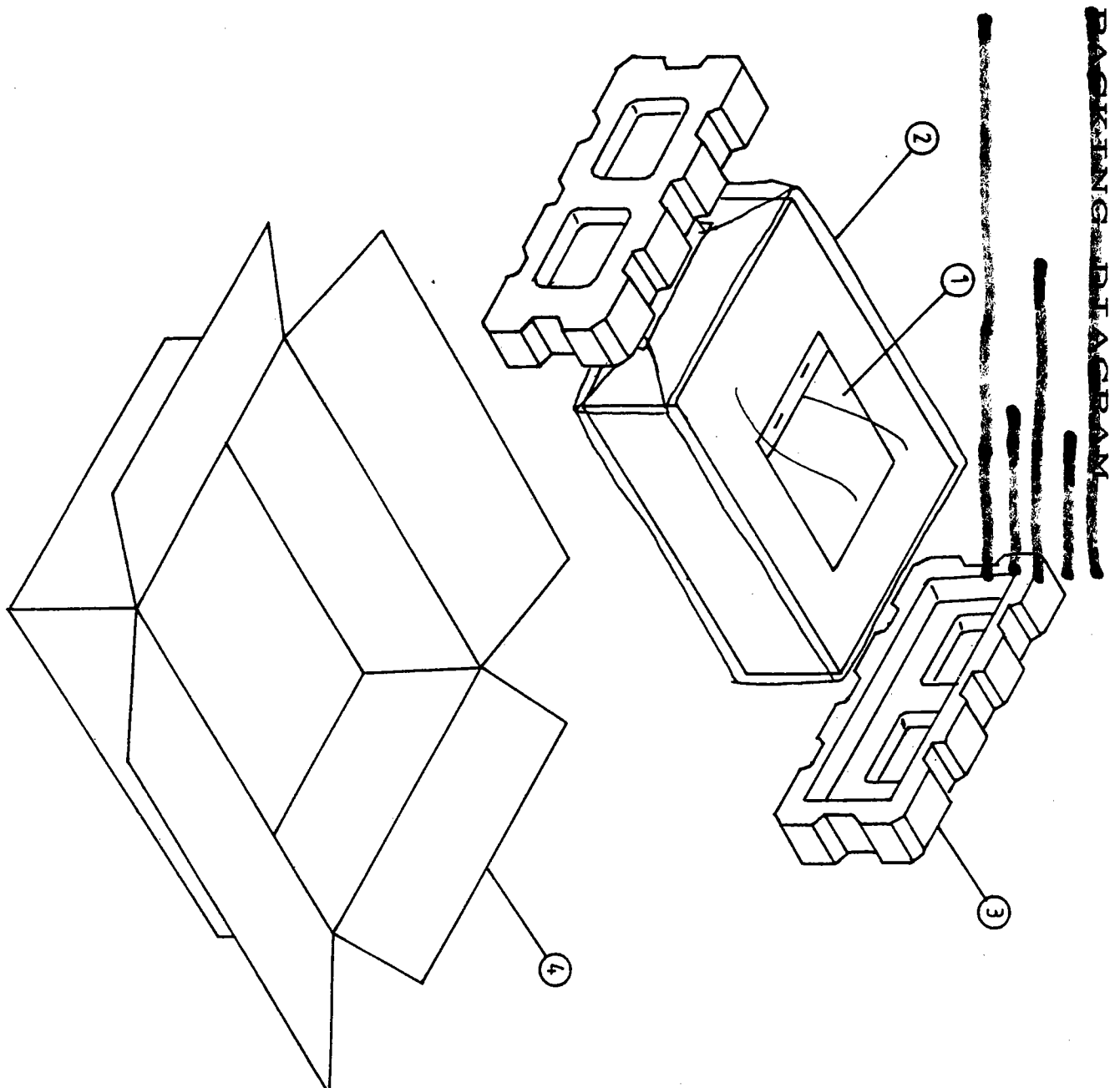
SYMBOL NO.	Q'TY	I/D	PART NO.	DESCRIPTION	SPACIFICATION	V/No.
C601.	1		17-5BR476M	CAP. EL.	47uF/50V, ±20%	
C602.	1		17-6.3BR476M	CAP. EL.	47uF/63V, ±20%	
C507, C508	2		17-5DR220J	CAP.	MC.C., 22pF/50V, ±5%	
C521.	1		17-25FR103J	CAP.	M.PE., 10nF/250V, ±10%	
C503, C504	4		17-5FR473J	CAP.	M.PE., 47nF/50V, ±5%	
C513, C514	4		17-5FR473J	CAP.	M.PE., 47nF/50V, ±5%	

D502	1		19-1179-L	PCB-SUB	FOR LED	
LED FIX	1		30-SB2021	L.E. DIODE	LED/SE2021, GRN	

D402	1		30-SB2021	L.E. DIODE	LED/SE2021, GRN	
IC1	1		30-NJM2043D	IC	NJM2043(D), JRC	
Q432	1		30-2SA817Y	TR.	2SA817Y, TOSHIBA	
Q431	1		30-2SC1627Y	TR.	2SC1627Y, TOSHIBA	
Q401, Q402	2		30-2SC2878A	TR.	2SC2878A, TOSHIBA	
R431	1		16-1MK151J	RES. M. F.	150, 1W, ±5%, KINK	
R432	1		16-1MK820J	RES. M. F.	82, 1W, ±5%, KINK	
R411, R412	2		16-1/2CA121J	RES. C. F.	120, 1/2W, ±5%, TAPE	
R405, R406	3		16-1/4CA102J	RES. C. F.	1K, 1/4W, ±5%	
R434	3		16-1/4CA102J	RES. C. F.	1K, 1/4W, ±5%	
R433.	1		16-1/4CA152J	RES. C. F.	1K5, 1/4W, ±5%	
R409, R410	2		16-1/4CA223J	RES. C. F.	22K, 1/4W, ±5%	
R422, R423	2		16-1/4CA223J	RES. C. F.	22K, 1/4W, ±5%	
R435, R436	2		16-1/4CA472J	RES. C. F.	4K7, 1/4W, ±5%	
R403, R404	2		16-1/4MA333G	RES. M. F.	33K, 1/4W, ±2%	
R401, R402	2		16-1/4MA682G	RES. M. F.	68K, 1/4W, ±2%	
R407, R408	2		16-1/4MA472G	RES. M. F.	4K7, 1/4W, ±2%	
C431, C432	2		17-2.5BR476M	CAP. EL.	47uF/25V, ±20%	
C433, C434	2		17-2.5BR107M	CAP. EL.	100uF/25V, ±20%	
C403, C404	2		17-2.5BR107M	CAP. EL.	100uF/25V, ±20%	
C401, C402	2		17-5BR105M	CAP. EL.	1uF/50V, ±20%	
C405, C406	2		17-5FR222J	CAP.	M.PE. 2n2F/50V, ±5%	
C411, C412	2		17-5DR271J	CAP.	MC.C., 270pF/50V, ±5%	
C413, C414	2		17-5FR473J	CAP.	M.PE., 47nF/50V, ±5%	

ITEM	PARTS NUMBER	NAME	QTY
1	21-4041	OWNER'S MANUAL	1
2	26-0716	PE-BAG	1
3	34-1059	POLYLON	2
4	CT-5193	GIFT-BOX	1

PACKING LIST FOR NAD-1000



PACKING LIST FOR NAD-1000

NAD Electronics Ltd.
Model: 1000
Service Information
Issue 1
Date: 1 November 1990

Contact: [REDACTED]
[REDACTED]
5005 FR [REDACTED]
Netherstree
[REDACTED] TEL: (01) 453 0500 FAX: (01) 453 1500

Notes:

Proprietary information for servicing purposes only. The information given herein may not be used commercially without the prior written agreement of NAD Electronics LTD, Adastra House, 401-405 Netherstreet, London, N2 1QG, England

© 1990 BY NAD PRINTED IN TAIWAN R.O.C.

1000
STEREO PREAMPLIFIER

NAD ELECTRONICS
LONDON

SERVICE MANUAL